


INDIAN
ARCHITECT AND
BUILDER

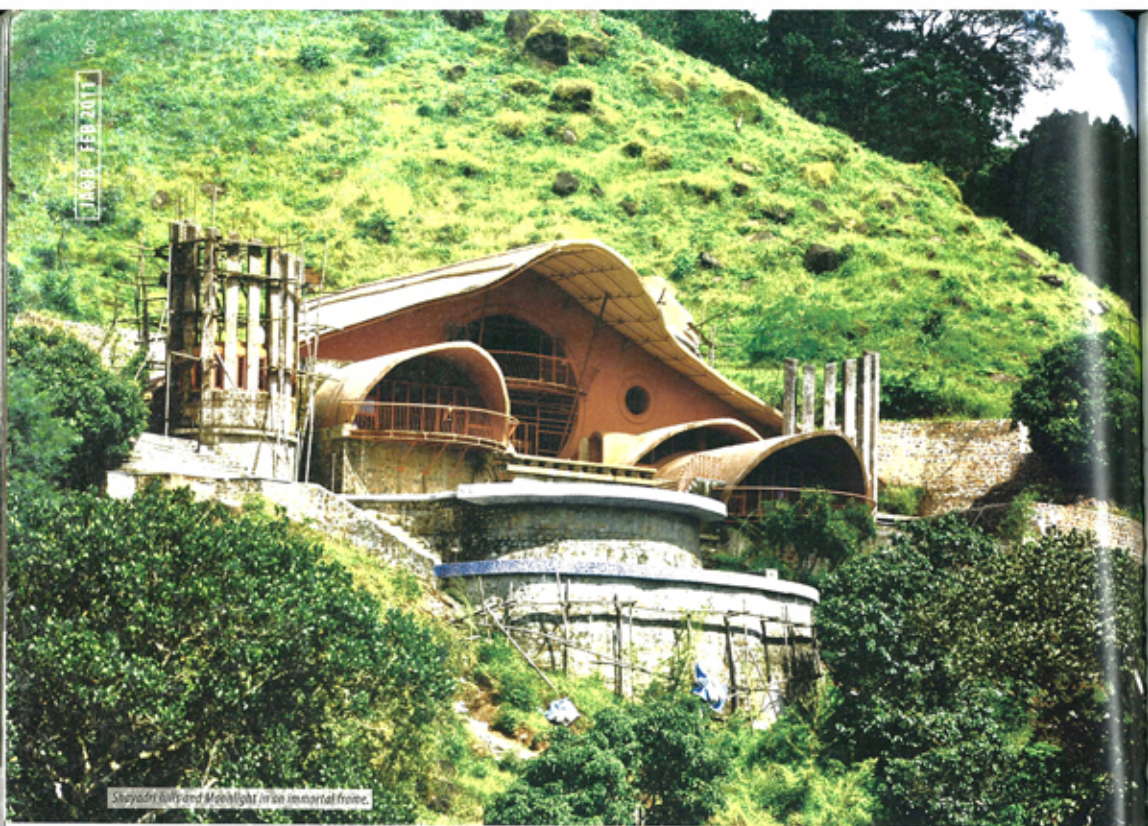
EXPLORE

VOL 24 (6) FEB 2011 ₹ 150

Free supplement: ASSA ABLDY Structured Gardens

Young' ||
designers

 **Jasubhai**
Media



Shayadri built and Moonlight in an immortal frame.

Farm House Organic Architecture, Mumbai

Mumbai-based architect Mahesh Naik featured in 2006 Young Designers issue, designs 'Moonlight' - A Contemplative Retreat through his contextual approach towards architecture.

Text: Sidharth Gupta

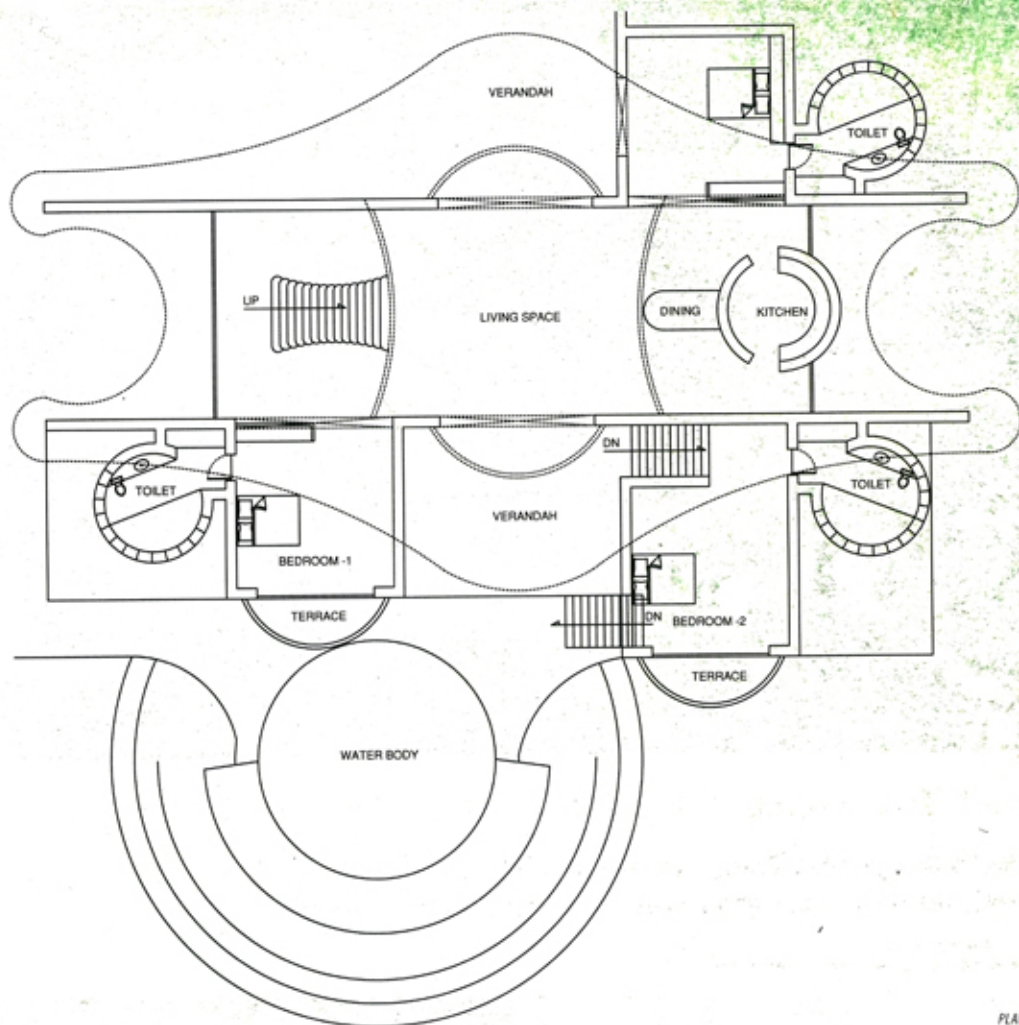
Photographs: courtesy Asim S. Wadkar and Mahesh Naik



The swimming pool overlooking the view.



The raw and vernacular material sensibilities of the architect.



PLAN

Mahesh Naik, believes that to invent future we have to go back to past, designs "Moonlight"; a farmhouse as named by the architect that induces ancient methods and technologies in its process of construction to build a cost effective and conducive abode. The site for this residence is surrounded by undulating landscapes of Shayadri hills. The plan of the residence limits itself to pure forms of a rectangle and a circle making it functionally efficient. The built form of the farmhouse portrays the architect's conquest of evolving the formal composition from its surroundings. Moonlight draws its spirit from an

honest use of natural local materials depicting itself as an expression of a "purist model". The built mass incorporates essential architectural and structural elements like arches, dome vaults and a concrete shell roof to enhance aesthetic value, structural stability and vernacular character.

To cope with the hot humid climate, all the spaces in the Moonlight open in the verandah. All the openings are strategically placed to capture the breeze passing through the swimming pool and water-fountain as a measure of passive cooling.

Moonlight, in its sense of belonging, does not replicate any pre conceived architectural style. It is a conscious attempt to convey a design derived from and for its contextual location.

FACT FILE:

Project	Moonlight Retreat
Location	Kot, Ratnagiri, Maharashtra
Built-up Area	15000sqft
Firm	Farmhouse Organic Architecture